

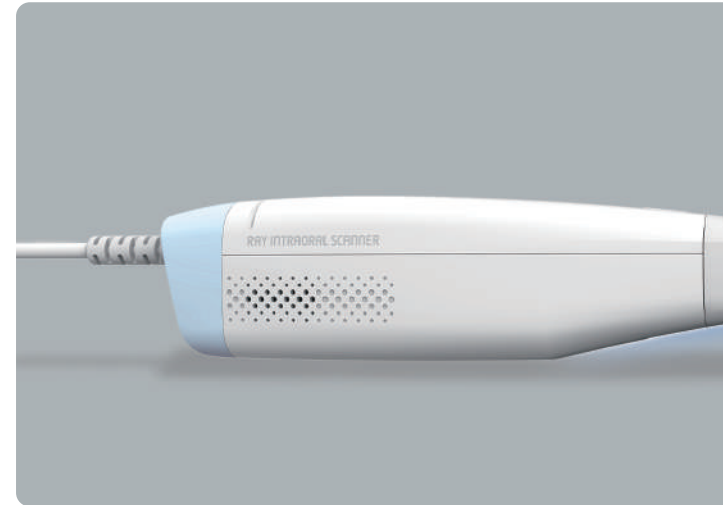
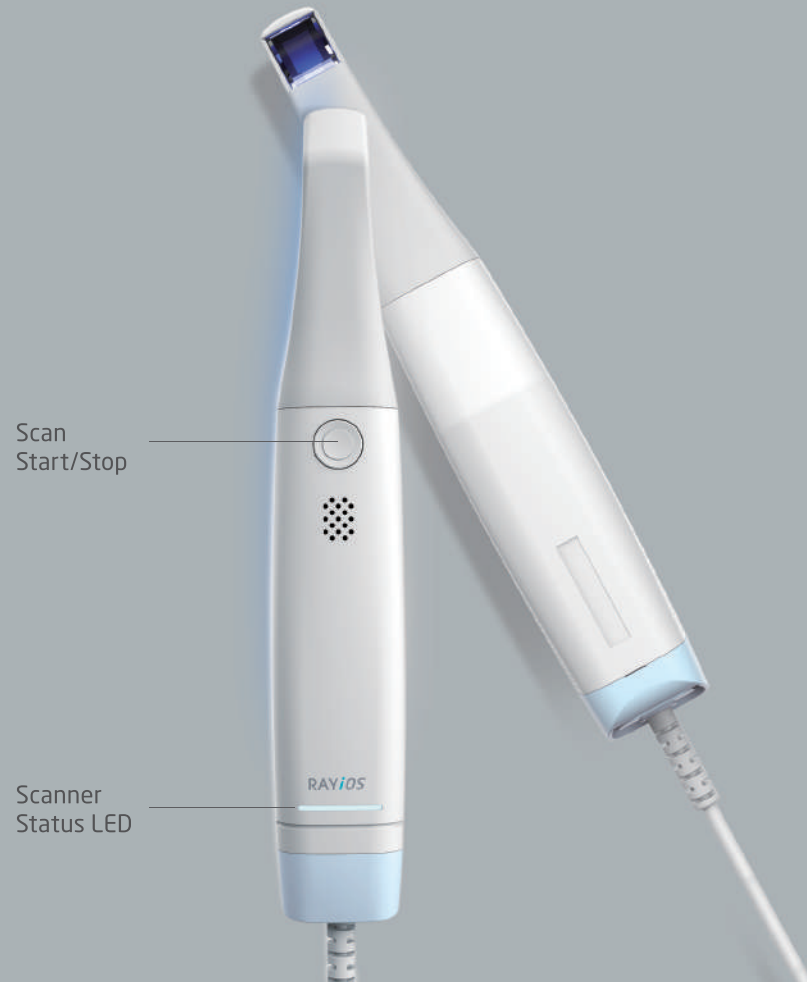
Ray

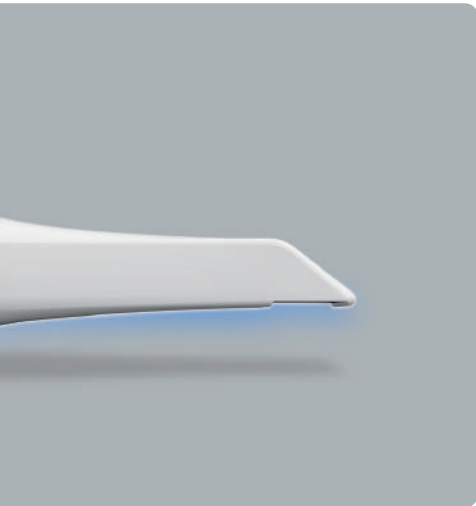
RAYiOS

INTRAORAL SCANNER



The First Move into Digital Dentistry, RAYiOS





HIGH USABILITY

① Open System

It supports an open type file format that is compatible with any device and allows collaboration with dental labs and other partners.

② Ergonomic Design

Stable center of gravity design and grip feeling for user consideration make scanning more comfortable.

③ No Powder

You can scan comfortably without powder.

PRECISE EXPRESSION

① Full Color

It provides a real color scan that can distinguish between teeth and soft tissue in the mouth.

② HD Scanning

High-definition 3D scanning technology is applied to show even the details of margin lines.

③ Accurate Scanning

The advanced technology enables precise scanning.

For your Best Digital Experience, RAYiOS

Accurate Scanning

For best result, precision is a top priority from scanning to design and milling.

Fast Processing

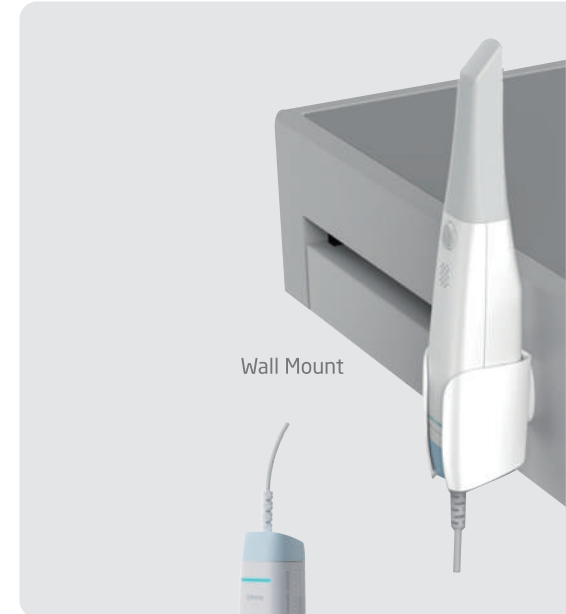
Save time for patients and staff with ONE-DAY treatment.

High Compatibility

Introduce digital treatment with advanced imaging systems and equipments designed for dental clinics and labs.



Cradle



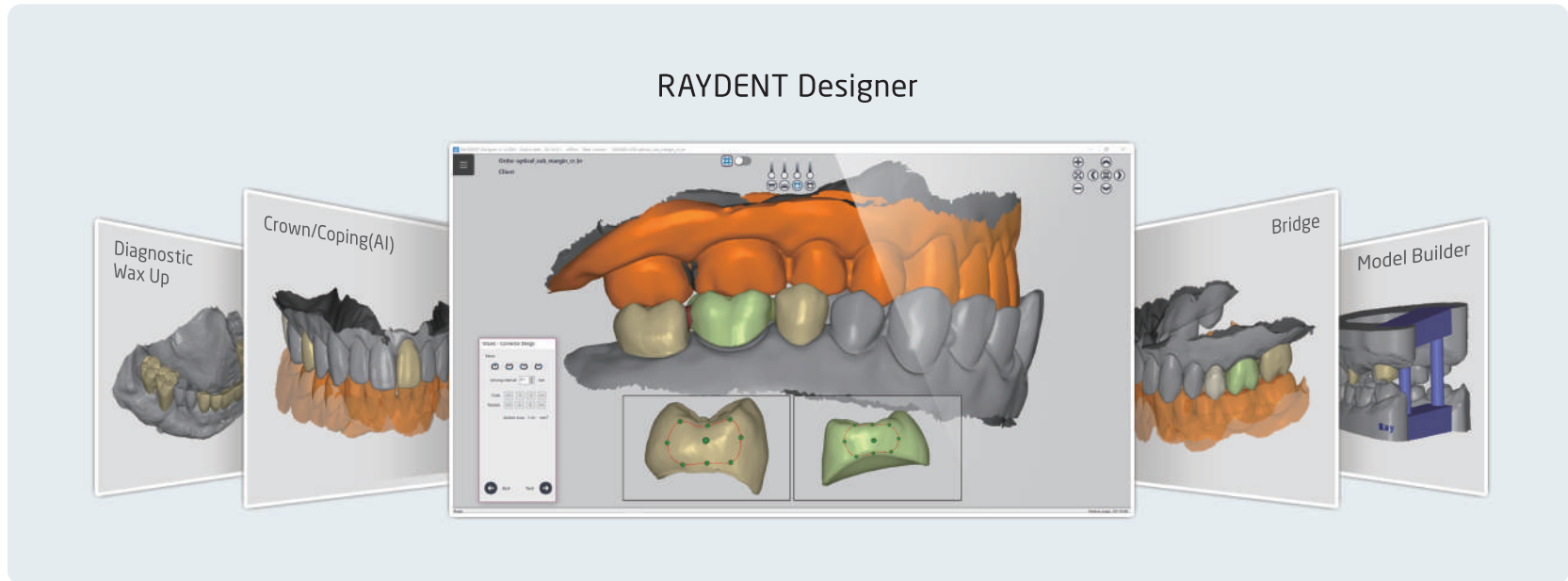
Wall Mount



Calibration Kit

RAYDENT Designer

Using Ray CAD Software, optimized for chairside solution, makes a digital treatment plan more simple and easier.



Easy & Fast Patient-Tailored Tooth Design

It is easy to design all kind of tooth shapes such as incisor, premolar and molar.

Manual/Automatic Occlusal Adjustment

Occlusal adjustment is available manually or automatically at user's convenience.

Seamless Workflow

It works smoothly with various CAM systems, including 3D Printer and Milling Machine.

Various Prosthetic Design

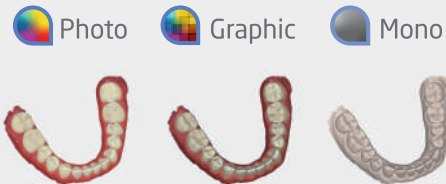
RAYDENT Designer provides various design functions including Crown, Bridge, Inlay/Onlay, Provisional Crown & Bridge, Veneer, Coping, Diagnostic wax up and Model Builder.

Expand Realm of Treatment Possibilities with RAYiOS



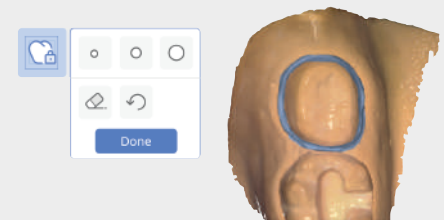
Snapshot & Camera

You can use the snapshot and photo functions to store data and send it to where you need it. This can be useful for patient counseling and charting.



Color mode

By selecting various color modes (Photo, Graphic, Mono), you can check the image of the scanned data more clearly and accurately.



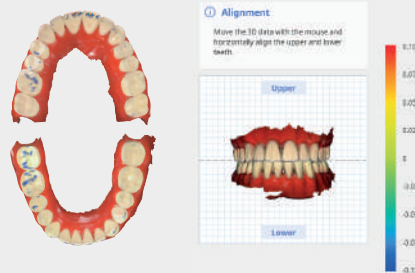
Lock surface

Use when data in a selected area needs to be preserved so that it is not affected by further scans by locking the selected area through the lock surface function.



Trim

You can modify the scan data quickly and easily.



Bite Analysis

Analyze occlusions using scan data.



Implant

Scan body and Scan post for implant treatment can be scanned.

Specifications

Field of View	14 x 14 mm
Depth of Field	16 mm
Accuracy	20 um (Single Crown)
Scanning Method	Digital structured light projection
Acquisition	Realtime video process scanning
Weight	280 g (Only handpiece weight)
Dimensions	263.5 x 43 x 49.4 mm
Tip (Autoclavable)	Autoclave 100 times

PC Requirements

CPU	Intel Core i9-11900H
RAM	32 GB
GPU	NVIDIA GeForce RTX 3070 8 GB
OS	Windows 10 Pro 64 bit





 **Ray co.,Ltd.**

HQ. Two Sun World Building 12th Floor 221, Pangyojeok-ro
Seongnam-si, 13494 South Korea

Tel. +82.031.605.1000 Email. ray_sales@raymedical.co.kr

www.raymedical.com

Design and specifications are subject to change without notice.

Scan QR Code
RAY Informarion

