

MediMatch

LABORATORY & SUPPLIES

www.medimatch.com



COMPOSITE INJECTION PROTOCOL

020 3875 8530 | MediMatch
www.medimatch.com | LABORATORY & SUPPLIES



WEBSHOP



INSTALL



TRAIN



SUPPORT



LAB



DESIGN

1st STEP (in surgery)

NO PREP

- Consultation with patient. Understand the result the patient is after.
- Take front view retracted photograph under a natural light. Additional side view photos can also be taken.
- Scan the patients mouth, and send the scan to the lab.



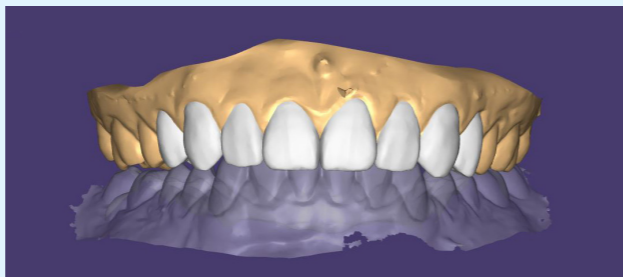
WITH PREP

- Consultation with patient. Understand the result the patient is after.
- Take front view retracted photograph under a natural light. Additional side view photos can also be taken.
- Scan the patients mouth, and send the scan to the lab. Inform the lab which teeth you intend on preparing.



2nd STEP (in lab)

- The technician will design your patients new smile.
- You will be sent a link to view the digital design, you may share this with your patient.
- Once you have approved the design, if the case is suitable the technician will print a trial mock up, otherwise a putty will be made for you to make a trial mock up in surgery.



3rd STEP (in surgery)

NO PREP

- Try in the trial mock up.
- Inform lab if any changes need to be made.



WITH PREP

- Try in the trial mock up.
- Prepare the teeth where necessary.
- Take a new scan of the prepared teeth.
- Send the new scan to the lab, and inform them if any changes need to be made.



4th STEP (in lab)

- Once approved, the technician will print the smile design model, and create a exaclear stent over it.



ALTERNATING TEETH INJECTION TECHNIQUE STEPS

1st STEP

- Insert the PTFE tape between the teeth and then over the adjacent tooth, covering the teeth on either side of the tooth that will be veneered first.



2nd STEP

- Apply G-premio bond to the tooth that's going to be veneered.
- Dry the tooth.
- Light cure the tooth.



3rd STEP

- Insert the injection tip into the stent, to make a hole in it.

TIP

Remove excess exaclear from the tip before injecting composite.



4th STEP

- Place the exaclear stent over the teeth.



5th STEP

- Attach the injectable composite to the tip.



6th STEP

- Inject the composite.
- Move the tip up and down when injecting.

TIP

Ensure you have enough composite in the syringe before you start. Excess composite is better than too little.



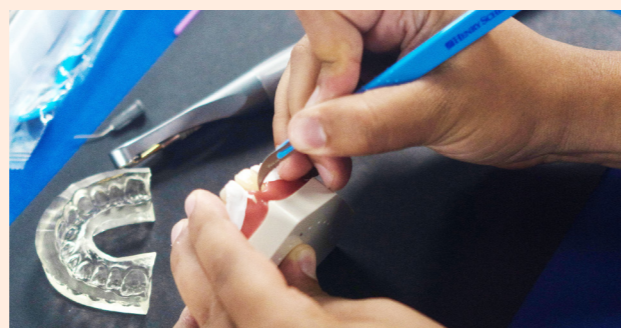
7th STEP

- Remove the injection composite, and light cure over the exaclear stent. Then remove the stent and light cure again.



8th STEP

- Clean up the margins.



9th STEP

- Use a file strip to neaten up mesial and distal contacts.



10th STEP

- Use the pink EVE diacomp polishing bur.



11th STEP

- Use the grey EVE diacop polishing bur to get the final polish.



12th STEP

- Take a new scan and send it to the lab to fabricate a nightguard for the patient.



MediMatch
LABORATORY & SUPPLIES

020 3875 8530
www.medimatch.com



020 3875 8530 **MediMatch**
www.medimatch.co.uk LABORATORY & SUPPLIES



WEBSHOP
INSTALL



TRAIN
SUPPORT



LAB
DESIGN

LABORATORY INFORMATION

Workflow from Scan Only, You will receive:

- Digital wax up to mobile nr or email
 - 1*Free redesign if needed included
- Putty and wash impression with V-carving on margin for trial-smile
 - (indicate and deduct £60 of price if you don't need this)
- Digital printed model with full wax up & exaclear stent
- Digital printed model with alternating teeth method & Exaclear stent
- Soft nightguard to wear after treatment
 - (Send a new scan and an additional charge of £47)

Optional:

- Superimposing 3d digital design on patient 2d picture
- Ordering relevant GC material via order form or via online shop
- Relevant equipment via online shop
 - Medit scanner
- Exocad software to make your own design
 - Exocad courses

Info:

- Design is typically ready within 48H of receiving the scan.
- We accept scans from all scanner brands.
- Contact info via scan@medimatch.co.uk
- WhatsApp the team via 07740743653 or call 02038758530

Fee indication for direct composite bonding restorations

- | | |
|-------|-------|
| • 3-3 | £ 336 |
| • 4-4 | +£10 |
| • 5-5 | +£10 |
| • 6-6 | £366 |

For preparing the GC Injection Veneers, we are offering a set of products which will be required for producing high-quality Veneers. Injectable composite veneers offer the possibility of “do-overs,” which are relatively straightforward to execute. Order the supplies needed for the Injection Veneer by scanning the QR code.



For your patient, kindly scan the QR to download the options for cosmetic dental treatment and the associated advantages/disadvantages and risks.



WIRELESS CURING LIGHT

Wireless curing light with an attractive design translates into maximum working comfort thanks to its light weight, ergonomic shape and its 360° rotation of its head. It can solidify 2mm of composite in one second making it the fastest in its class.

3 modes for option

- Normal mode
- Intensity mode
- Turbo mode

Scan the QR code
to know more and to order

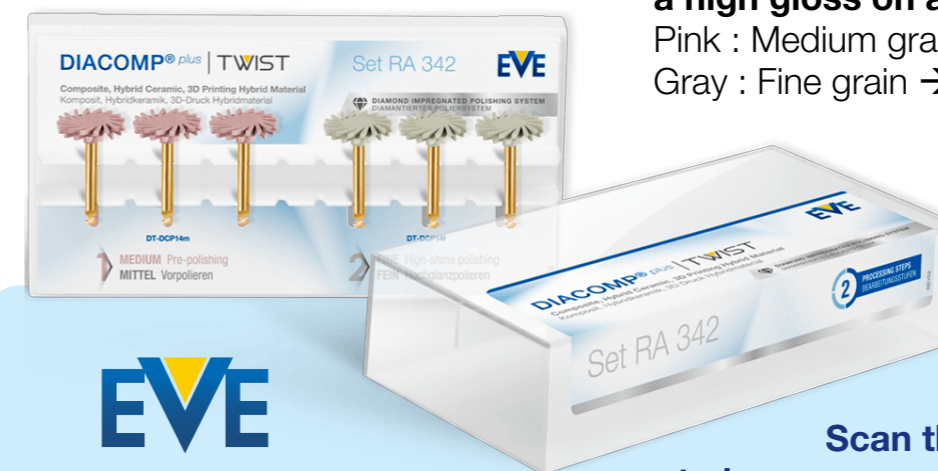


DIACOMP PLUS TWIST

DIACOMP PLUS TWIST are rotary polishers for composites with flexible blades

- Polishers specifically adapted to each processing step.
- Get the best results even on very hard composites.
- Polishers with a longer life span.
- Preserves the surface of the structure without modifying it.
- More efficient and bright polishing.
- The sheets adapt to all surfaces.

2-step polishing system to provide a high gloss on all composite materials:
Pink : Medium grain → For pre-polishing.
Gray : Fine grain → For high gloss polishing.



Scan the QR code
to know more and to order





This document was created with
Dr Andrew El-Nazir

**DMD MFDS MSc Aesthetics (Kings),
Clinical Lead Banning Dental Group,
Focus Trainer, Smile Dental Group
lecturer, MediMatch Key Opinion Leader.**

Andrew is not just a dentist; he's a trailblazer in the field of aesthetic dentistry. With extensive experience, Andrew has earned a reputation for his exceptional skill in the G-aenial Universal Injectable Composite technique. His courses have become highly sought-after, and for good reason!



Aesthetic Dentistry Extraordinaire: Andrew's passion for aesthetics is palpable in every aspect of his work. He understands that a smile is not just a set of teeth; it's a canvas for artistry. Witnessing his patients realize their desired outcomes and leaving his practice with newfound confidence is what fuels his dedication.



Guiding Your Journey: Andrew is not just an instructor; he's your mentor. He's committed to helping you master the intricacies of the G-aenial Universal Injectable Composite technique. With his guidance, you'll gain the knowledge and skills needed to elevate your practice and deliver remarkable results to your patients.



Your Questions, His Answers: Have a burning question about injectable composite? Andrew is here to provide answers. He welcomes your inquiries and is dedicated to your professional growth.

Connect with Dr Andrew El-Nazir



andrew@medimatch.co.uk



[dr.andrew.dentist](https://www.instagram.com/dr.andrew.dentist)

BOOK ONTO OUR
COMPOSITE INJECTION
MOULDING VENEER
COURSE



**Mobile
Smiles**



Join Andrew in supporting Mobile Smiles.
See how you can help today!

020 3875 8530 **MediMatch**
www.medimatch.co.uk **LABORATORY & SUPPLIES**