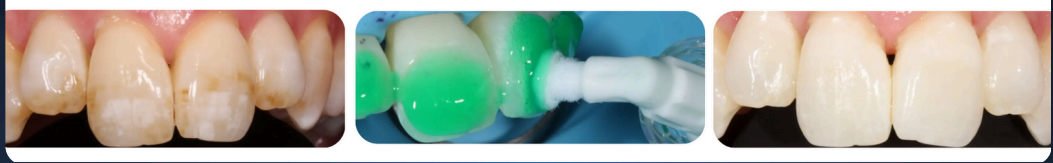


ICON & Teeth Whitening with Dr. Kiran Shankla



09.00- 09.30AM	Welcome, Registration, Tea/Coffee & Introduction
09.30- 10:45AM	Opening Session: Practice Growth, Patient Communication & Whitening Solutions
10:45 11:30AM	Digital Dentistry in Whitening: Scanning and 3D Printing Demonstration
11:30- 11.50AM	Morning Coffee Break
11:50- 12:30PM	Icon Resin Infiltration for Proximal Lesions & AI Technology in Dentistry
12:30- 1:00PM	Rubber Dam Isolation
1:00- 2PM	Lunch Break (Provided On-Site)
2:00- 3:30PM	Smooth Surface Icon Resin Infiltration
3:30- 4:45PM	Hands on session – Rubber dam & Icon Resin Infiltration for anterior & posterior teeth
16:45 5:00PM	Open Forum & Discussion

MATERIALS

Icon kit Anterior, proximal foils for posterior demo

Quartz

Mini Dam

DMG Bond

Fast and Slow Handpiece

EVE Burs - Grey & Medium Pink [Click To Buy](#) [Click To Buy](#)

Mandrel

Sof-Lex Polishing Discs

Blue Acclean Prophy Cups

Number 12 Scalpel

Non-serrated metal strips

Yellow IPR strips

[Click To Buy](#)

Serrated metal strips

Epitex Tape

PTFE tape

Oral B floss & Gorilla floss

Modelling brushes with handles

Optrasculpt Instrument

Optrasculpt pads 6mm & 4mm

Modelling Resin

Woodpecker Light cure

[Click To Buy](#)

Ecosite Elements Box

Hands on Instruments - Mirror, right angle probe, Flat plastic, LM arte Tool

Rubber Dam Heavy and Thick, Stent, Rubber Dam Punch, Rubber Dam Template
[Click To Buy](#) | [Click To Buy](#)